

ERCILDOUNE HOMESTEAD

FACILITY INFORMATION

Ercildoune Homestead

'Ercildoune' is a former farming property dating back to 1850, the homestead built in 1888 is one of a small number of surviving late nineteenth century farmhouses in the City of Casey and is significant as a superior and well preserved example of a Victorian Italianate villa. Council committed to restoring the homestead and surrounding landscape to create a space for locals to come together to connect, belong, learn and play.

Ercildoune Homestead aspires to be:

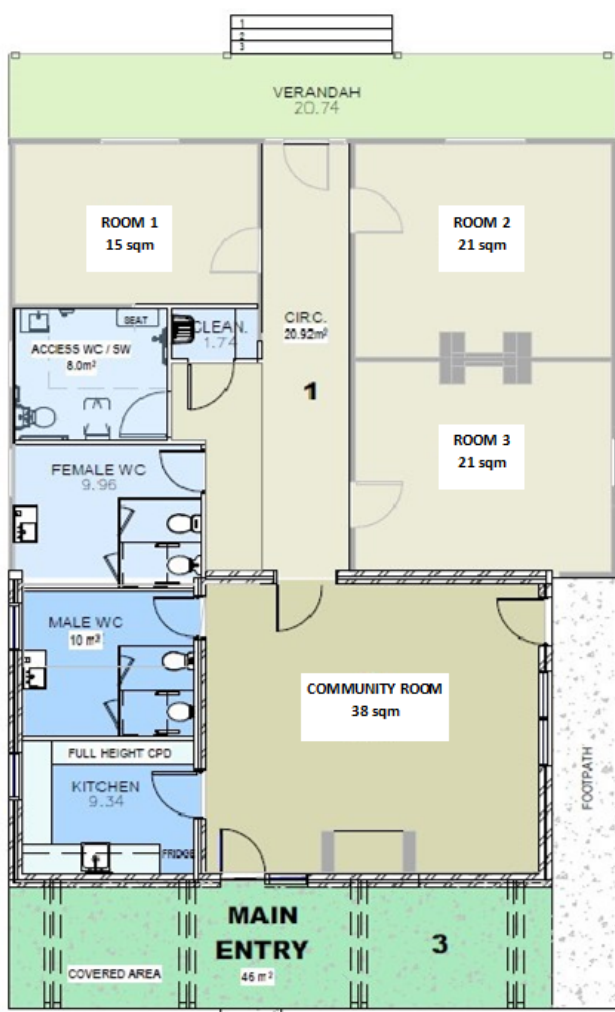
- a place where people can build relationships and a community identity
- a place where locals can meet and carry out activities
- a place that strengthens the life of the community
- a place where locals can access a range of activities, programs, and services

Location



Located on Ercildoune Court, Cranbourne West, the homestead is within walking distance to public transport (Bus 760, 792) and a short drive to Cranbourne West Community Hub, shopping precinct, local businesses and schools. Parking can be accessed off City Vista Circuit.

Floor plan



Ercildoune Homestead has been set up with local small business and allied health providers in mind. With multiple spaces that can support, meetings, consultation, individual and group counselling, training and small group activities.

Rooms and resources

Room	Capacity	Special Features
Room 1 15 square metres	Two workers and two clients.	<ul style="list-style-type: none"> » Two workstations » Monitors for connecting a device » Seating » Wi-Fi
Room 2 21 square metres	Three workers and four clients.	<ul style="list-style-type: none"> » Three Workstation. » Monitor for connecting a device » Seating » Wi-Fi
Room 3 21 square metres	10 people seated	<ul style="list-style-type: none"> » Lounge and seating » Wi-Fi
Community Room 38 square metres	15 people around tables.	<ul style="list-style-type: none"> » AV screen » Whiteboard » Access to kitchen

In addition to the features listed, all rooms include:

- Tables and chairs suitable to the room
- Provision to connect computer to visual equipment and monitor via HDMI
- Access to kitchen
- Access to crockery and cutlery
- Fully accessible amenities
- Onsite parking

Hire fees and charges 2023

Hire is divided into two separate categories with detailed fees and charges. Please note these fees are subject to change as directed by Council.

Category 1: Community hire

Community Service Organisations, member-based organisations, health care providers with Medicare rebate, partnerships with Council and religious services providing community programs. Not for profit organisations.

Examples of this type of group include welfare agencies, sports clubs, Rotary clubs, neighbourhood houses, churches providing community programs residents associations, volunteer and general interest groups. Proof of community group registration may be required.

Category 2: Standard hire

Organisation conducting activities for the purpose of deriving a profit including businesses and private health care providers.

Examples of this type of organisation or agency include registered training organisations, commercial businesses, business activities, private providers such as speech therapy, State and Federal Government agencies, small and home-based business and private health care providers.

Hire fees

Hire is available 7 days a week, **7.00 am to 9.00 pm**

Room	Category 1 Community hire rates	Category 2 Standard hire rates
Room 1	\$10.70	\$14.80
Room 2	\$13.20	\$16.60
Room 3	\$10.70	\$16.60
Community Room	\$13.20	\$16.60
Whole facility	\$30.50	\$43.00

Hire of combined rooms (two or more spaces at the same time) will receive a discount to the hire fees.

Additional fees

Public Liability Insurance - Not available with commercial hire	\$15.00
Bond for additional Key and Swipe (regular groups only)	\$50.00
Additional Cleaning Fee – payable on public holidays, facility closure dates or if cleaning is inadequate	\$250.00

Bond

A bond will be charged for each room to cover costs of any damage caused during the hire. The bond will be fully refunded at the end of the hire term if there is no damage to the facility.

Bonds paid electronically will be returned via direct deposit upon successful inspection and return of keys and may take up to 4 weeks to be refunded. Bonds paid via cash will be available for collection on the next business day upon successful inspection from staff and the return of any keys.

Room 1, 2 and 3	\$100.00 per space
Community Room	\$100.00
Whole facility	\$500.00

Booking and Payments

Please contact Cranbourne West Community Hub directly with booking enquiries via email cwch@casey.vic.gov.au or call 9705 5889.

Regular hire

Will be invoiced at the end of each month via email to the accounts contact provided in the facility booking form. The full balance must be paid within 30 days of the issue date as outlined on the invoice. To be considered for Regular Hire Rate the minimum criteria is one booking per month over six months.

Casual hire

Upon acceptance of the booking a non-refundable deposit of 50% of the full hire is due and paid in full no later than 4 weeks prior to the booking date. Bookings made within 4 weeks of the required date must be paid in full at the time of booking.

Cancellation

Cancellations of upcoming bookings must be advised in writing and emailed by the account contact to Cranbourne West Community Hub as per the following conditions:

Regular Hire

A minimum of 7 days is required to cancel both individual dates and the entire booking. All requests for cancellations must be in writing (email) and sent to Cranbourne West Community Hub. Any bookings that fall within the seven days will be charged as normal.

Casual hire

For cancellations 4 weeks or more prior to booking date, the 50% non-refundable deposit will be held to cover administrative costs associated with the booking.

For cancellations 4 weeks or less prior to the booking date, a 100% cancellation fee of all hire costs associated with the booking will apply.

Contact the City of Casey:

Web: casey.vic.gov.au
Email: caseycc@casey.vic.gov.au
Phone: 03 9705 5200
Post: PO Box 1000, Narre Warren VIC 3805
NRS: 133 677 (for the deaf, hearing or speech impaired)

Customer Service Centres:

Narre Warren: Bunjil Place, Patrick Northeast Drive
Cranbourne: Cranbourne Park Shopping Centre
ABN: 43 320 295 742

